

**Rated 4.8 Stars by our Customers!**



**Flooring to fit any style, anywhere.**



**FLOOR COVERINGS**  
*international*

Book now at [booknowfci.com](http://booknowfci.com)  
or call 385-213-0484

Each "Best Coverings International" feature independently owned and operated.



**UTAH REAL ESTATE  
RESOURCE CENTER**

**OUR SERVICES:**

- › Find a Home
- › Home Value
- › Communities

**LOVE WHERE YOU LIVE  
DISCOVER YOUR NEXT HOME**

**VISIT UTRERC.COM**

## Utah's Luxury Listings: Presented by The Secrist Team

2023 #1 SELLING TEAM | SERVING CLIENTS FROM SALT LAKE TO ST. GEORGE



**2222 E Walker Lane, Holladay**

9 BD | 10 BA | 9,275 SF | 1 AC | \$7,495,000

Introducing the pinnacle of contemporary luxury in the affluent Salt Lake City corridor, a never-lived-in 9,275 square foot mansion on a full acre of opulence. Featuring nine bedroom suites, each with arresting views and walk-in closets, along with a total of 10 baths, this estate is tailored for the elite.



**3162 E Eagle View, Sandy**

8 BD | 12 BA | 16,150 SF | \$5,990,000

Discover an unparalleled mountain retreat in Sandy. This expansive 16,150 square foot estate luxuriously spreads over 2.42 acres, offering seven bedrooms, 12 bathrooms, and a bevy of exquisite amenities.



**8178 Newbury Grove Ln, Cottonwood Hts**

5 BD | 5 BA | 5,218 SF | \$1,749,000

Exquisite near-new Craftsman style home upgraded for quality with all main floor living.

**587 E Mash Farm Circle, Murray**

4 BD | 5 BA | 5,308 SF | \$1,569,000

Exquisite (new build) custom home, boasting unspoiled mountain vistas.

**7258 W Summit Top Lane, Herriman**

4 BD | 3 BA | 4,137 SF | \$1,175,000

Embrace modern sophistication on 0.24 acres of serenity.

**850 S Donner Way #102, Salt Lake City**

4 BD | 3 BA | 2,505 SF | \$999,995

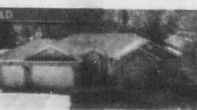
Enjoy glorious sunsets and sparkling city lights from this stunning condo.



**1892 E Ashley Mesa Lane, Sandy**

5 BD | 4 BA | 3,240 SF | 0.22 AC | \$825,000

Immaculate two-story in a quiet and highly desirable Sandy neighborhood.



**9118 S Meadow Lily Lane, West Jordan**

5 BD | 3 BA | 2,981 SF | 0.33 AC | \$799,000

Welcome home to suburban living in this immaculate West Jordan Rambler.



**91 & 93 W Ryker Ln (Units 7, 8), Midvale**

3 BD | 3 BA | 1,684 SF | \$474,900 & \$478,900

New C Street townhome boasts premium architectural elements in a great location.



**1789 Wide River Drive, St. George**

2 BD | 2 BA | 1,190 SF | 0.06 AC | \$348,000

Escape to St. George with this incredibly clean and charming Sun River 55+ community home.



**BERKSHIRE  
HATHAWAY  
HOMESERVICES**

**UTAH  
PROPERTIES**

**THE  
SECRIST TEAM**

Linda (801) 455-9999 • Brett (801) 301-6435 • Lisa (801) 455-9900 | @THESECRISTTEAM • LINDASECRIST.COM

FRANKED IN THE TOP 100 REAL ESTATE AGENTS IN UTAH

POOL